

ENERGY METERS ^{CE}

Direct Single Phase Modular Meters



- Accuracy Class 1
- Modular case: 1,2,3, and 6 modules
- Direct reading up to 100 A
- Pulse output

Direct Three Phase Modular Meters

- Accuracy Class 1
- Modular case: 6 modules
- Direct reading up to 90 A
- Balanced or unbalanced
- Pulse output

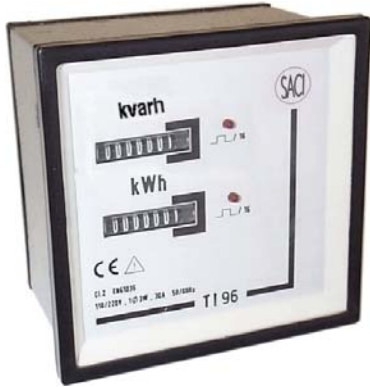


CT Modular Meters



- Accuracy class 2
- Modular case: 6 modules
- Primary selection by 16 position switch
- Balanced or unbalanced
- Pulse output

Switchboard Meters (direct or with CT)



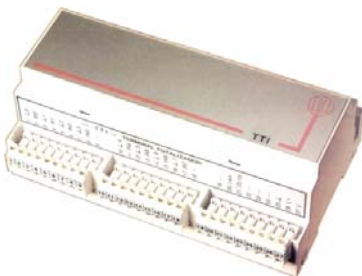
- Accuracy Class 2
- 96 mm
- 7 digits local counter
- Primary selection by 16 position switch
- Balanced or unbalanced
- Isolated current inputs
- Pulse output

Polyphase Meters

- Active and reactive energy
- Accuracy:
 - Class 1 active
 - Class 2 reactive
- Multi-tariff
- Maximum demand and Load profile
- Historical data
- Programmable



Accessories



- Converters
- Totalizers (8 pulse inputs)
- Totalizers with load profile
- Software